





### Activity 1

*Children enjoy having pets in the house. If you have a pet how would you care for it? Deliver a speech about the activities you do with your pet, in the class(online class).*

OR

## Activity 2:

How often do you go for an outing? How often do you go to play basketball?

Given is the list of various activities that you do. Choose at least twenty activities. Answer how often you do the activities chosen by you.

**How often do you...?**

**Frequency Cards:**

- always – often usually
- generally – frequently
- often – sometimes
- rarely seldom – never

**Frequency Cards:**

- every day / week / month / year
- once / twice... a day / a week...

**Activity Cards:**

- wash, take, eat, drive, drink, travel, visit
- read, wear, study
- walk, water, meet, buy
- go, throw, play, ride
- go, watch, swim
- offer, give, eat
- work, celebrate, prepare
- build, help, make
- eat, listen, bake
- Start, practice, clean, speak, check, pay

OR

## Activity 3

Name \_\_\_\_\_ Date \_\_\_\_\_

### Adventurous Adverbs

Think of five adventurous adverbs that describe the verb shown in the picture.

played



Five empty rounded rectangular boxes are connected to the central image by lines, intended for writing adverbs.

Name \_\_\_\_\_ Date \_\_\_\_\_

### Adventurous Adverbs

Think of five adventurous adverbs that describe the verb shown in the picture.

drank



Five empty rounded rectangular boxes are connected to the central image by lines, intended for writing adverbs.



# हिन्दी पखवाड़ा – अक्टूबर

## कक्षा – 4

### निर्देश

1. आप हिन्दी का एक फ़ोल्डर बनाए जिसमें सारी activities को क्रमानुसार रखिए |
2. कार्य सफ़ाई से कीजिए |
3. पखवाड़ा 1 में दी गई activity को अपनी हिन्दी कि कॉपी में करें |

### पखवाड़ा – 1

प्रश्न – भारत में कितनी ऋतुएँ होती हैं ? उनके नाम लिखें उन्में से आपको सबसे अच्छी ऋतु कौन सी लगती है और क्यों । अपने विचार लिखें

# OCTOBER ASSIGNMENT

## MATHEMATICS

### CLASS-IV

#### GENERAL INSTRUCTIONS:

1. The assignment is based on the chapter “MEASUREMENT”.
2. The assignment is based on daily life situations.
3. Read the hints given below carefully and understand them before filling in the blanks.
4. Do the assignment in your classwork notebook.

S. NO.	ITEM	RATE (PER kg/l/m) in Rs.	COST OF 500 g/ml/cm in Rs.	COST OF 250 g/ml/cm in Rs.	COST OF 750 g/ml/cm in Rs.	COST OF 100 g/ml/cm in Rs.
1.	RICE	80				
2.	SUGAR	40				
3.	PULSES	120				
4.	COOKING OIL	140				
5.	FLOUR	36				

#### Hint:

- 1)  $1 \text{ kg} = 1000 \text{ g}$  ,  $\frac{1}{2} \text{ kg} = 500 \text{ g}$  ,  $\frac{1}{4} \text{ kg} = 250 \text{ g}$  ,  $\frac{3}{4} \text{ kg} = 750 \text{ g}$  ,  
 $\frac{1}{10} \text{ g} = 100 \text{ g}$
- 2)  $1 \text{ litre} = 1000 \text{ ml}$
- 3)  $1 \text{ meter} = 100 \text{ cm}$

**CLASS: IV**

**SCIENCE OCTOBER ASSIGNMENT**



**TOPIC: ADAPTATIONS IN ANIMALS**

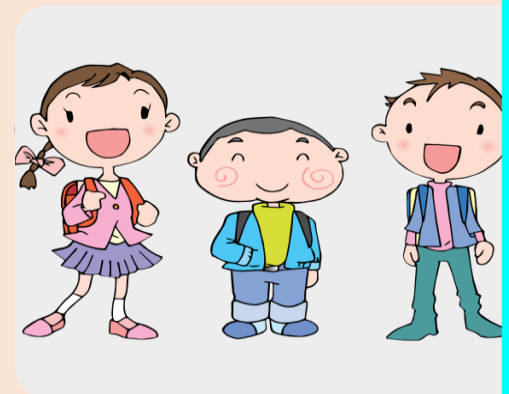
**GENERAL INSTRUCTIONS:-**

- Remember to write your name and class.
- Original drawings and creative use of material will be appreciated.
- Use drawing sheet or an A4 size sheet

Q1. Complete the chart using your knowledge.

**NOTE: WATCH THE VIDEO CAREFULLY AND ATTEMPT THE QUESTIONS ASKED.**

**LINK: - <https://youtu.be/7k8CcAU2Lt0>**



- (I) Find out the names of endangered animals discussed in the video.
- (II) Why do these animals become endangered?
- (III) Mention any two tips to protect these endangered animals.
- (IV) Make a face mask on any endangered animal.



**OR**

Q2. Collect different pictures of animals from old magazines/ books. Paste and categorize them on the basis of their habitats or feeding habits.

\*\*\*\*\*



**OCTOBER ASSIGNMENT**  
**CLASS-IV**  
**SUBJECT- SOCIALSCIENCE**

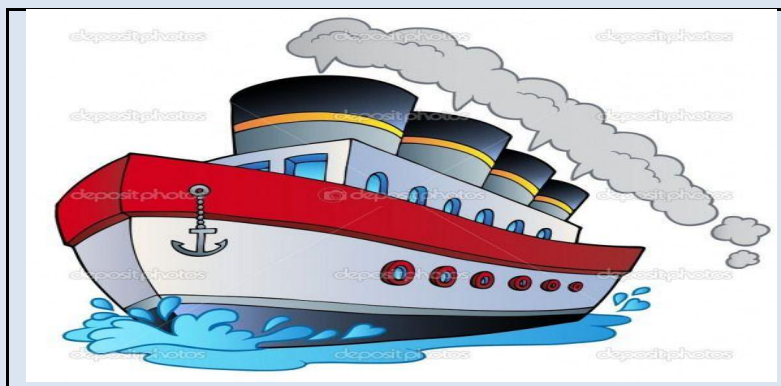
**GENERAL INSTRUCTIONS**

- ❖ **Do your work neatly. Do any one question**
- ❖ **Submit your assignment on ERP.**



**Q1. Draw the given picture on A-4 size sheet, colour it and answer the following:**

- a) When did the first train of Indian railways run and where did it run?**
- b) Name three superfast trains of India.**
- c) In which cities of India do we have metro trains?**
- d) In what respect are trains better than road transport?**
- e) Name three heritage trains of India.**



**Q2. Draw the given picture on A-4 size sheet, colour it and answer the following:**

- a) How do we transport heavy machinery and products like petroleum products and oil from one country to another?**
- b) Why are the seaports important for a country?**
- c) Name four major seaports of India.**
- d) What is the cheapest mode of transporting heavy cargo to far off countries?**
- e) How many major seaports does India have?**

# Class- 4

## General Instructions:

1. Submit your assignment on ERP after completion.
2. Assignment is based on Chapter-4.

Prepare a MS Word file that describes multimedia, its uses and key devices for multimedia input as well as output with suitable images.